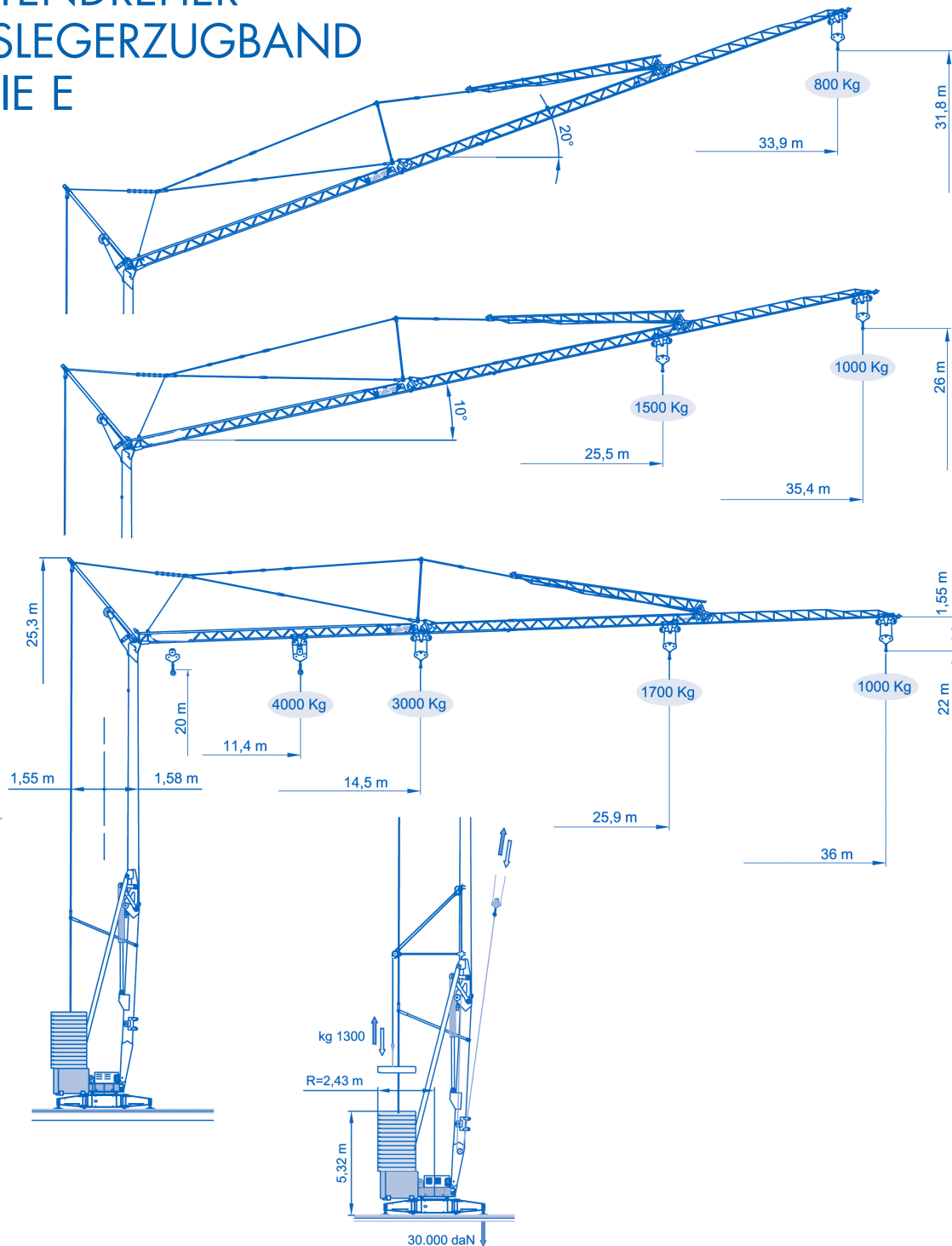
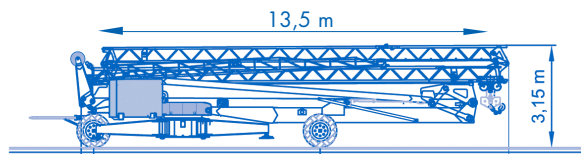
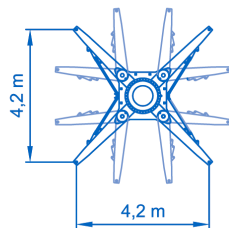
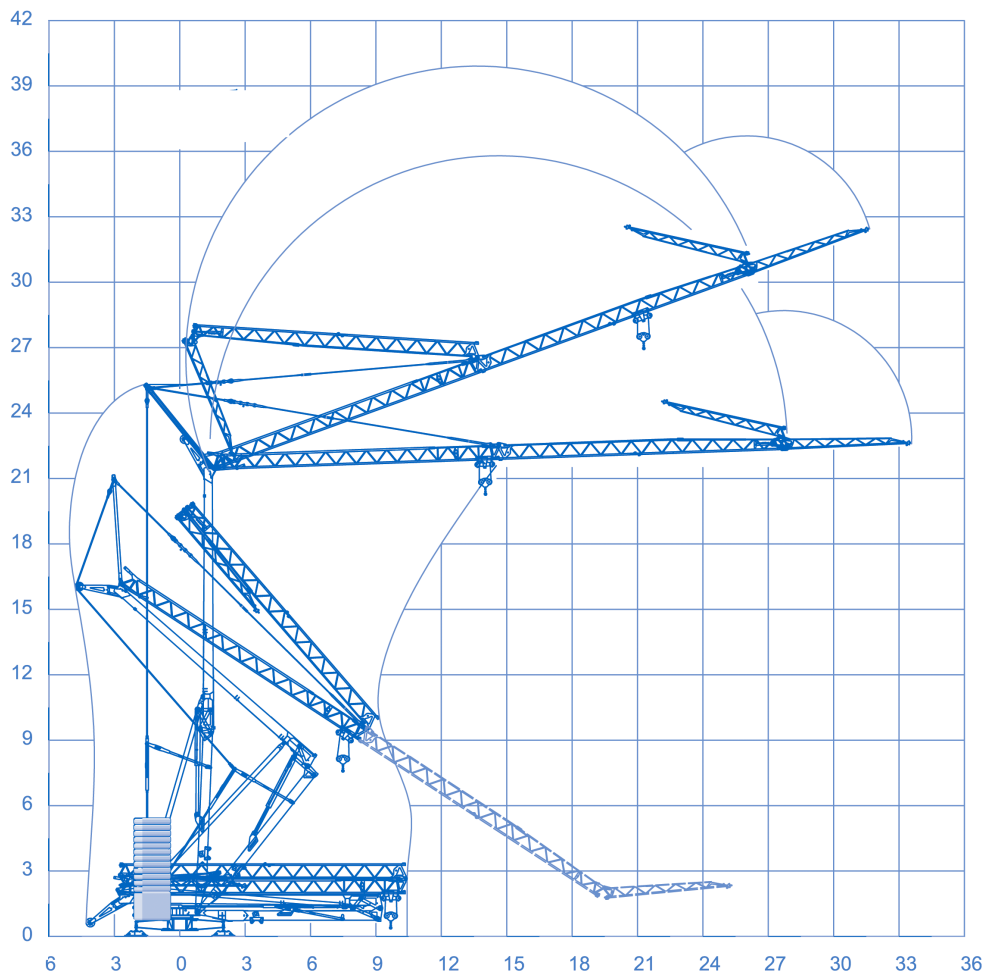


UNTENDREHER AUSLEGERZUGBAND SERIE E



| | | | | | | | | | |
|----|------|------|------|------|------|------|------|------|------|
| Kg | 4000 | 3776 | 3134 | 2670 | 2320 | 2046 | 1825 | 1644 | 1493 |
| m | 11,4 | 12 | 14 | 16 | 18 | 20 | 22 | 24 | 26 |
| Kg | 1364 | 1254 | 1158 | 1074 | 1000 | | | | |
| m | 28 | 30 | 32 | 34 | 36 | | | | |



| | | | | |
|--|---|---|----------|---|
| | m/min 8 - 4 20 - 10 46 - 23 56 - 28 | kg 2000 - 4000 2000 - 4000 1200 - 2400 800 - 1600 | kw 11 | TRIFASE TRIFASICA TRIPHASEE THREE-PHASE DREHSTROM |
| | m/min 0 - 1 | | kw 3 | v 400 |
| | m/min 16 26 48,7 | | kw 3 | MAX. POWER KVA 12 |

EUROGRU®

Am Dornbusch 10, 64390 Erzhausen

Telefon +49 6150 13440

Fax +49 6150 7002